

From: [Stromdahl, Mark](#)
To: [Moriconi, Dave](#)
Cc: [Bruce Gist](#); [Chuck Crovo](#); [Walsh, Sharon](#); [Logan, Godfrey](#)
Subject: [External] 2019.05.28 proposed property subdivision.pdf
Date: Tuesday, May 28, 2019 12:56:05 PM
Attachments: [2019.05.28 proposed property subdivision.pdf](#)

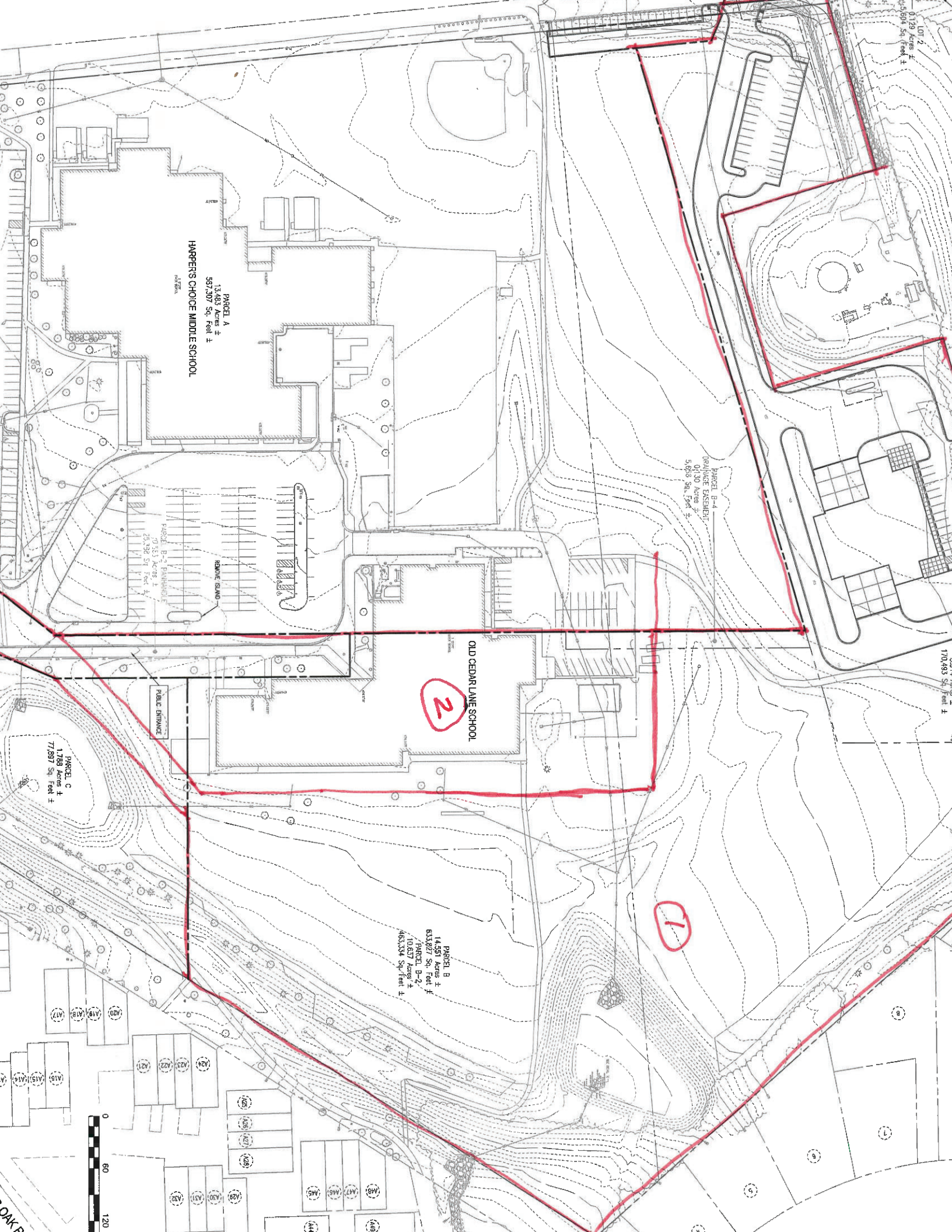
Dave:

Please see proposal which gives us the bulk of the property without needing to deal with the school.
Does access from Harpers Farm Road work?

Bruce:

Hope you are coming to our meeting today so we can discuss this.

Mark



PAGE: A
13.463 Acres ±
597,307 Sq. Feet ±
HARPER'S CHOICE MIDDLE SCHOOL

OLD CEDAR LAKE SCHOOL

2

1

PAGE: B
14.351 Acres ±
633,027 Sq. Feet ±
HARPER'S CHOICE MIDDLE SCHOOL

PAGE: C
1.788 Acres ±
77,897 Sq. Feet ±
HARPER'S CHOICE MIDDLE SCHOOL

