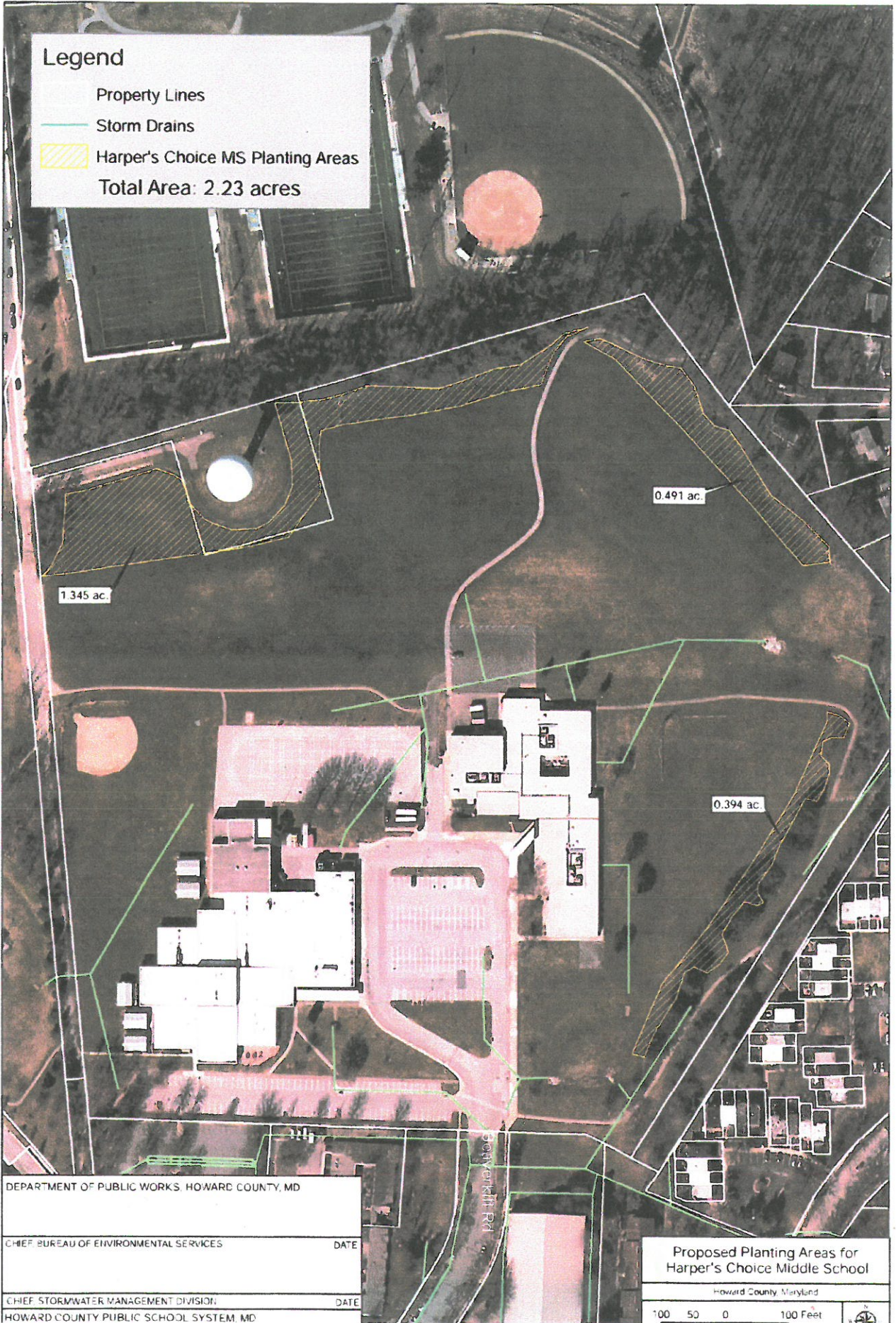


Legend

- Property Lines
 - Storm Drains
 - Harper's Choice MS Planting Areas
- Total Area: 2.23 acres



DEPARTMENT OF PUBLIC WORKS, HOWARD COUNTY, MD

CHIEF BUREAU OF ENVIRONMENTAL SERVICES DATE

CHIEF STORMWATER MANAGEMENT DIVISION DATE

HOWARD COUNTY PUBLIC SCHOOL SYSTEM, MD

Proposed Planting Areas for
Harper's Choice Middle School

Howard County, Maryland

100 50 0 100 Feet

